



**SYARIKAT
BORCOS SHIPPING
SDN BHD.**

**MARINE SERVICES TO THE
OFFSHORE INDUSTRY**



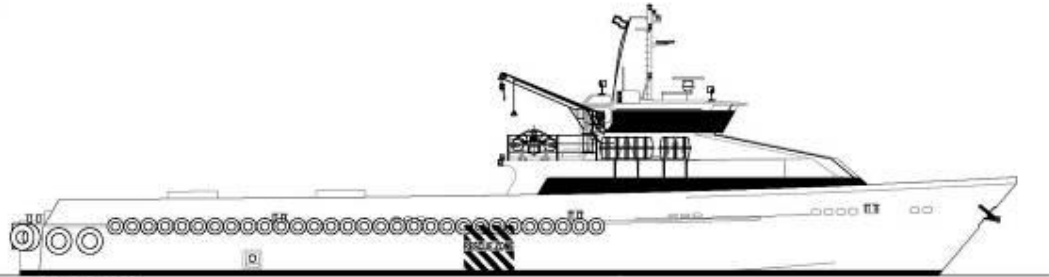
M.V. "BORCOS FIRDAUS 4"

40 M UTILITY VESSEL

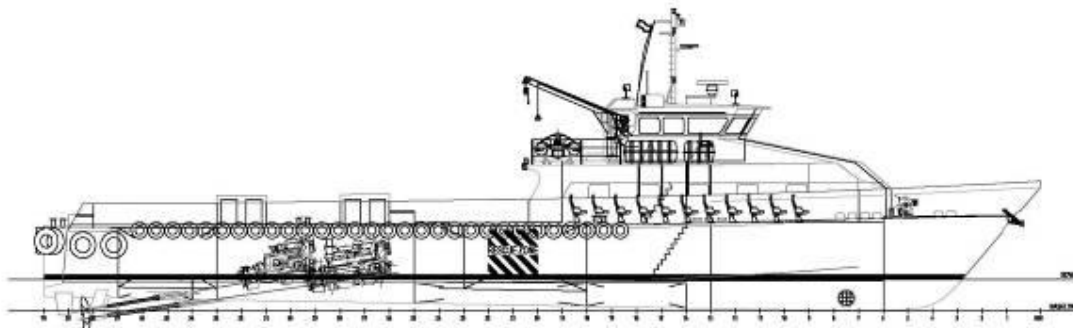
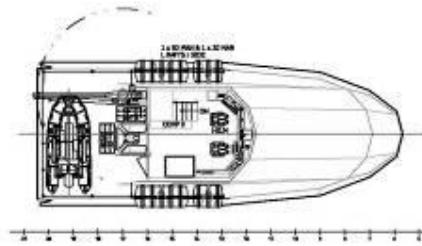
TECHNICAL SPECIFICATION

<u>Item</u>	<u>Specification</u>	<u>Item</u>	<u>Specification</u>
01. Name	Borcos Firdaus 4	16. Propulsion Machinery	
02. Type of Vessel	Utility	a) Main Engines	2 x Cummins KTA38M2 1 x Cummins KTA50M2
03. Design Characteristics	Designed and built for the purpose of standby and transportation of personnel/materials	b) Propulsion	3 x fixed pitch
04. Plying Limit	Near Coastal	c) Bow Thruster	1 MT thrust
05. Classification	ABS	17. Navigation & Communication Equipment	
06. Notation	ABS + A1 HSC AMS	a) Gyro Compass	Fitted
07. Port Of Registry	Kuching	b) GPS	Fitted
08. Flag	Malaysia	c) Radar	Fitted
09. Horse Power	4500 BHP	d) Echo sounder	Fitted
10. Performance		e) Marine VHF	Fitted
Cruising speed	25 Knots	f) Marine SSB	Fitted
11. Fuel Consumption		g) Auto pilot	Fitted
Cruising	688 litres/hr	h) Directional Finder	Fitted
Gen-Set	20 litres/hr	i) GMDSS	A1 & A2
12. Main Characteristics		18. Accommodation	Fully air conditioning for 51 business class high back reclining Seats and 10 crew Complement
L.O.A	40.37 M	19. Fire Fighting Equipment	
Beam Molded	7.50 M	a) Fire hydrant station	As per Classification's requirement
Draft designed	2.30 M	b) Fire Extinguisher	Portable type at appropriate locations
Loaded Displacement	220 Tonnes	c) Fixed system	Co2 smothering system for engine room protection
Lightship	95 Tonnes	20. Life Saving Appliances	As per SOLAS 74/78, Port of Registry and Classification's requirement
13. Capacity		21. Other Equipment	
Fuel Oil	60000 litres	a) Life Raft	4 x 50 men inflatable life raft c/w automatic hydrostatic release
Fresh Water	25000 litres	b) Rescue Boat	1 x 6 men Semi-Rigid rescue boat c/w 25 hp outboard engine.
Clear Deck Space	110 sq. m	22. Owner	Sykt. Borcos Shipping Sdn Bhd
Deck Cargo	44 Tonnes	23. Designer	Strategic Marine (Singapore) Pte Ltd
14. Auxiliaries	2 x Cummins 80 Kw	24. GRT/NRT	238 / 71
15. Pump		25. Year built	2007
a) Main Bilge and fire pump	Desmi S70-50-220/A09, 30 cu.m./hr at 54 m head	26. Builder	Strategic Marine (Singapore) Pte Ltd
b) Back up bilge and fire pump	Johnson F9B-5600, 17 cu.m/hr at 30 m head	27. Official Number	330854
c) Emergency fire pump	Yanmar BX20CR, 600 ltrs/hr at 32 m head	28. Call Sign	9WHA4

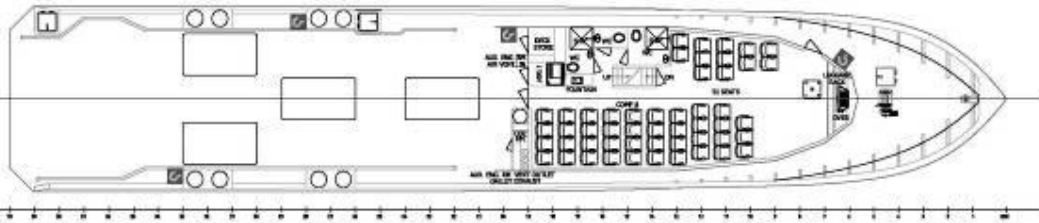
Particulars Are Correct At The Time Of Printing



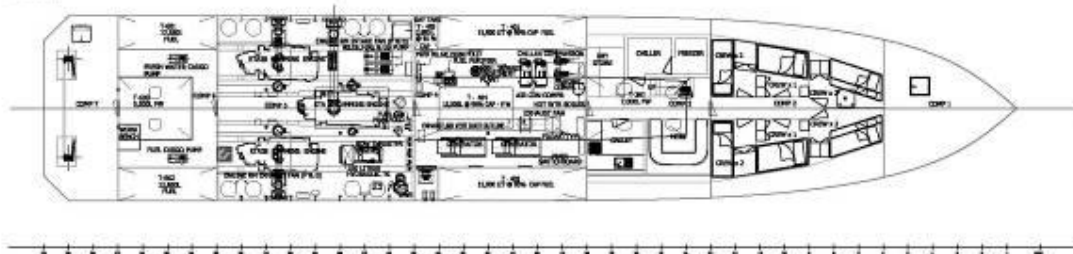
STBD PROFILE
SCALE 1:200
ARABY 5076



STBD PROFILE
SCALE 1:200



MAIN DECK
SCALE 1:200



LOWER DECK
SCALE 1:200



Strategic Marine
 Ltd 1 Clarence Dock Road
 Sanderson W.A. 6106
 Telephone (818) 9427 4848
 Facsimile (818) 9427 4838
 SOLIHERLY DESIGNS
 2006/07/01 1000 00000

40.37m RIG-PERSONNEL / UTILITY VESSEL
 GENERAL ARRANGEMENT

DESIGNED BY SOLIHERLY DESIGNS
 DRAWING NO. SM-110-00
 DATE 2006/07/01

NO.	REV.	DATE	BY	CHKD.	APP.
1	1	2006/07/01			
2	1				
3	1				
4	1				
5	1				
6	1				
7	1				
8	1				
9	1				
10	1				
11	1				
12	1				
13	1				
14	1				
15	1				
16	1				
17	1				
18	1				
19	1				
20	1				
21	1				
22	1				
23	1				
24	1				
25	1				
26	1				
27	1				
28	1				
29	1				
30	1				
31	1				
32	1				
33	1				
34	1				
35	1				
36	1				
37	1				
38	1				
39	1				
40	1				
41	1				
42	1				
43	1				
44	1				
45	1				
46	1				
47	1				
48	1				
49	1				
50	1				

SM-110-00

